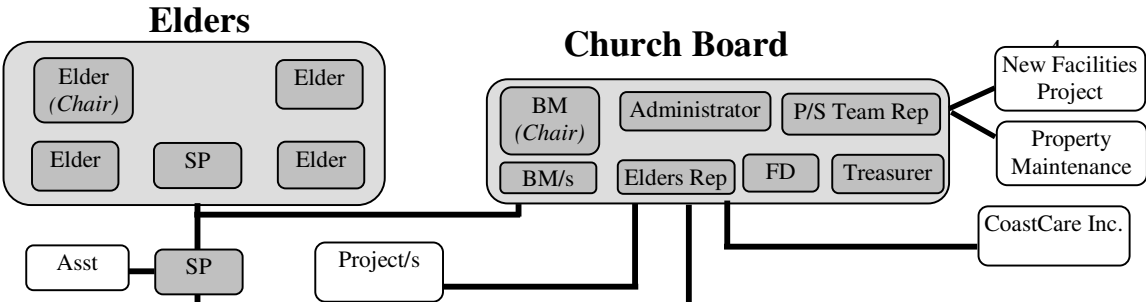
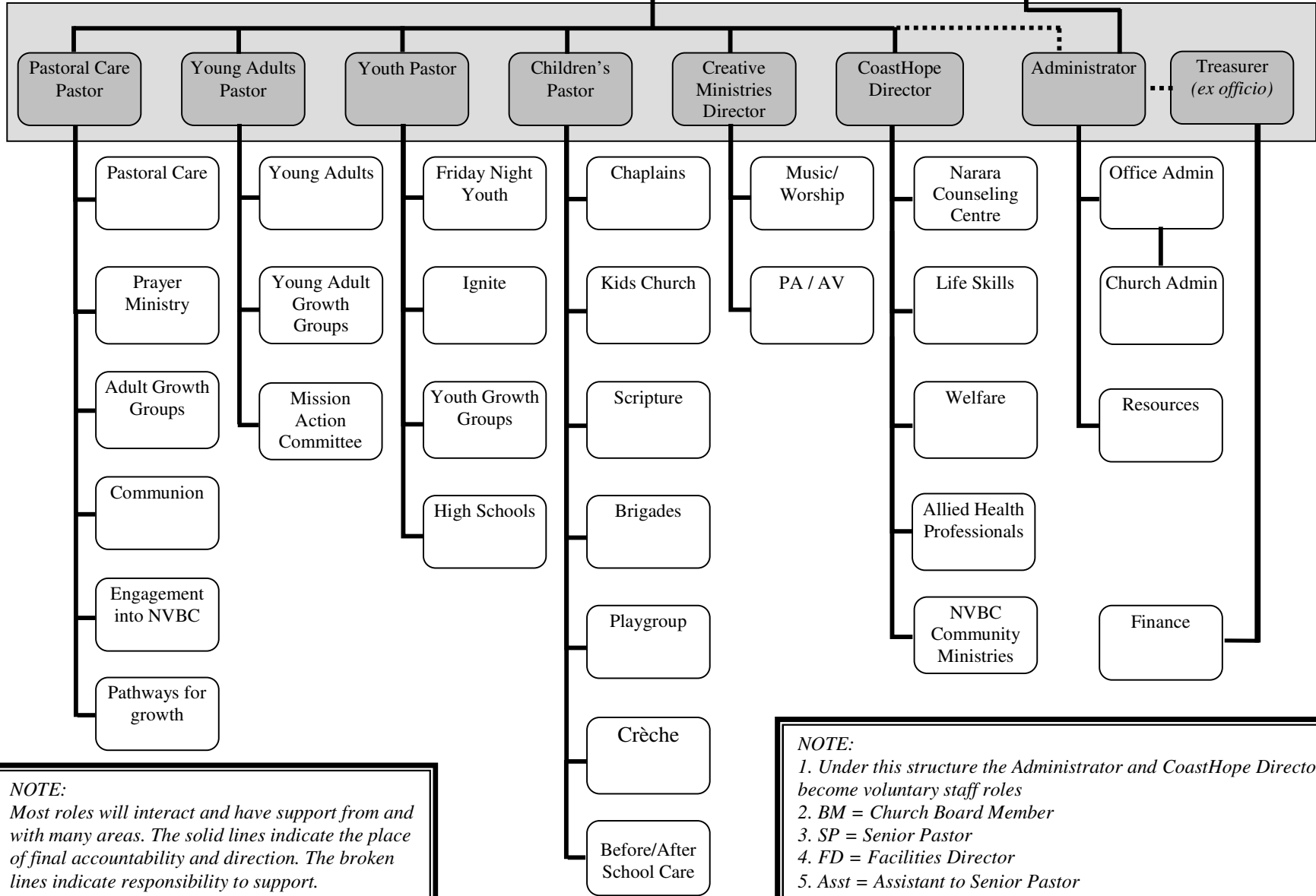


NOTE:
The Elders are accountable to the Partners to ensure the appropriate processes are in place for the progressive pursuit of the Vision, Mission and Values. The Elders delegate responsibility, via the structure below, for components of this pursuit to the Senior Pastor, Pastors/Staff and/or the Church Board. Elders are not normally involved in day to day matters.



Pastors/Staff Team



NOTE:
Most roles will interact and have support from and with many areas. The solid lines indicate the place of final accountability and direction. The broken lines indicate responsibility to support.

NOTE:
 1. Under this structure the Administrator and CoastHope Director become voluntary staff roles
 2. BM = Church Board Member
 3. SP = Senior Pastor
 4. FD = Facilities Director
 5. Asst = Assistant to Senior Pastor